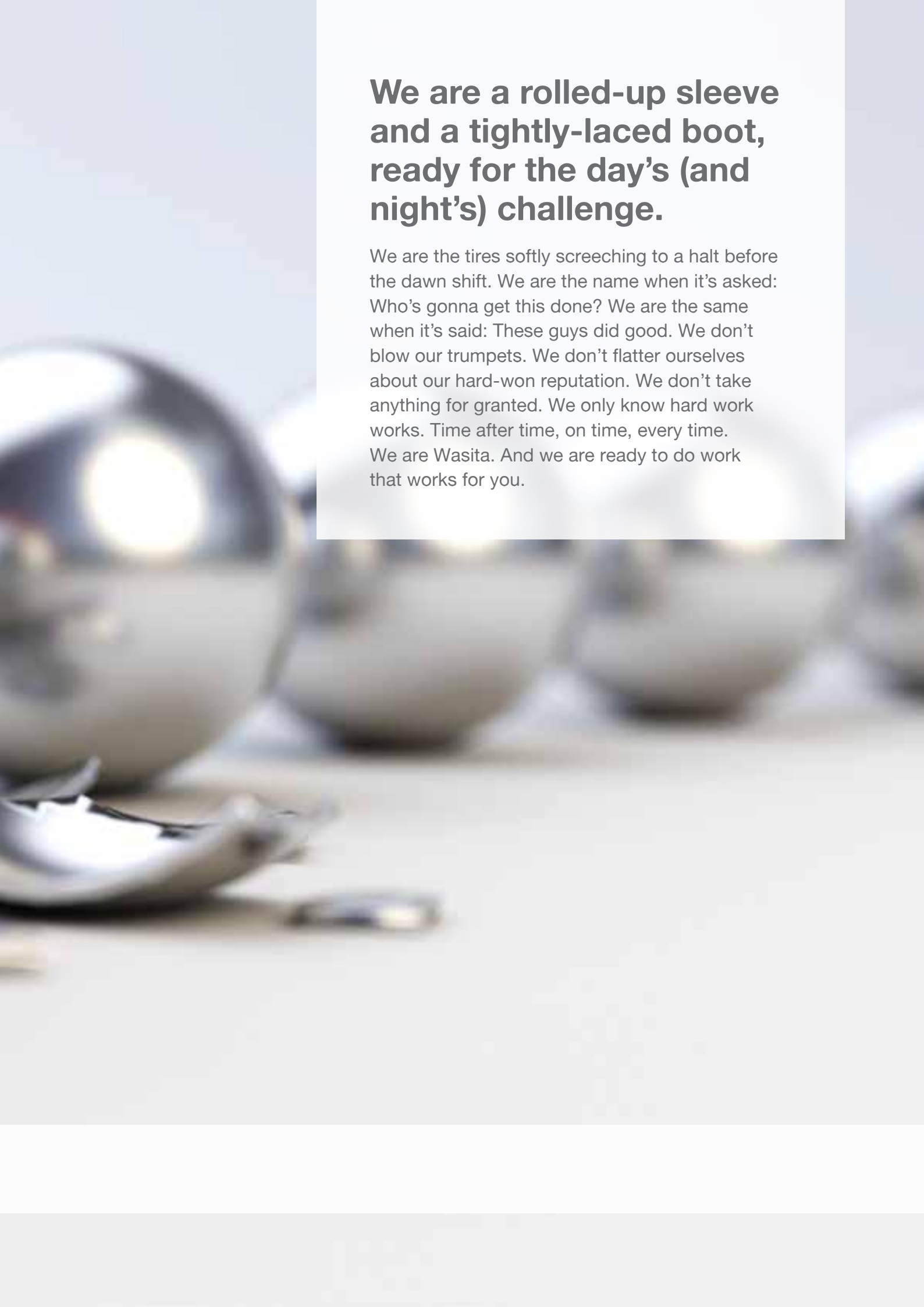






Who we are.



We are a rolled-up sleeve and a tightly-laced boot, ready for the day's (and night's) challenge.

We are the tires softly screeching to a halt before the dawn shift. We are the name when it's asked: Who's gonna get this done? We are the same when it's said: These guys did good. We don't blow our trumpets. We don't flatter ourselves about our hard-won reputation. We don't take anything for granted. We only know hard work works. Time after time, on time, every time. We are Wasita. And we are ready to do work that works for you.

trust, straightforward, transparent,
sincere, clear, enthusiastic,
loyal, open, dynamic, personable,
balanced, **flexible**, hard working,
understanding, no hidden agenda,
streamlined, ethical, **accessible**

transparent, modest, smart,
c, **respect**, dedicated,
sonal, progressive,
orking, diligent,
agendas, thoughtful,
sible, honest

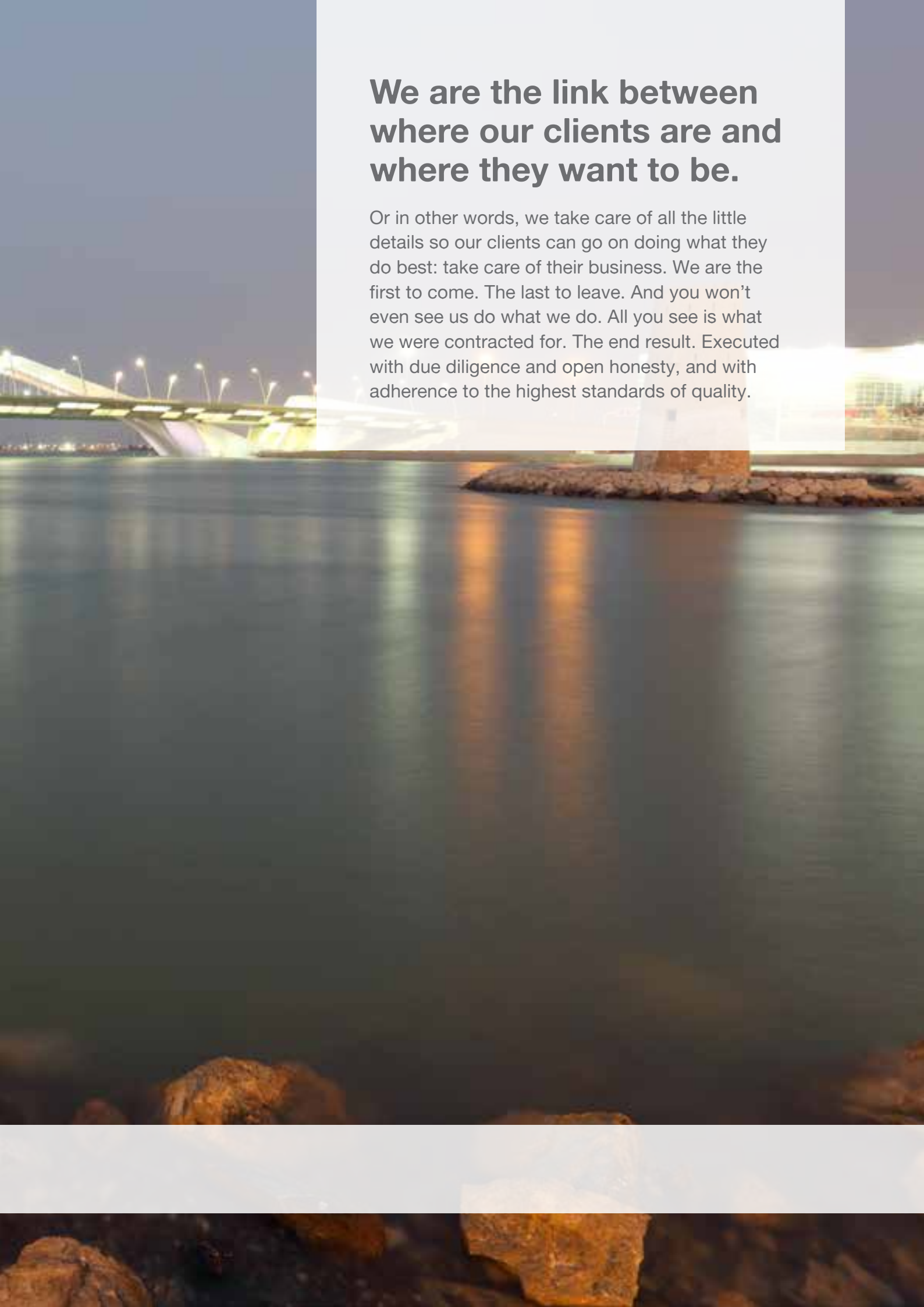


What we believe.





Ways we work.



We are the link between where our clients are and where they want to be.

Or in other words, we take care of all the little details so our clients can go on doing what they do best: take care of their business. We are the first to come. The last to leave. And you won't even see us do what we do. All you see is what we were contracted for. The end result. Executed with due diligence and open honesty, and with adherence to the highest standards of quality.

New place, same deliverables. Experience counts. We began in 1983 and now we have presence all over the region.

Our work ethic is present in several sectors: Military, Oil & Gas (Onshore & Offshore), Healthcare, Education, Infrastructure, and Corporate. We start relationships that last. Our proven contract retention and re-tender track record clearly proves our work works.

U.A.E.



Jordan



Iraq



Saudi Arabia



Qatar



Kuwait



Turkey



Libya





Where we work.



**BUILD, OWN, OPERATE: CAMPS, RESIDENTIAL VILLAGES, STAFF ACCOMMODATION,
REMOTE SITE LIFE SUPPORT SERVICES (ONSHORE & OFFSHORE)**

Facilities Management/ Establishment and Remote Logistics

There is a way, a solution; we are the means to it. Unhindered by circumstances, we deliver what we promise. Whether that task is as arduous as building a military outpost on a weather-beaten hill or as exhaustive as managing the daily needs in a bustling workers camp, we have the expertise to execute our job with finesse. We perform engineering and design, project management, catering, laundry, housekeeping, sewage removal, security, maintenance, pest control, transportation and logistics. We provide complete life support solutions.



**WRC 2 CAMP
WESTERN REGION
ABU DHABI, UAE**



**CONTRACTUAL CATERING
KITCHEN DESIGN & CONSULTANCY**

Contract Catering

We serve over 100,000 meals everyday, which means more than 100,000 times every day, our expertise is put to the test. And we triumph, every single time due to our personalised service coupled with top quality and value for cost.

Since 1983, we have been going that extra mile, operating large-scale dining facilities for militaries, universities, hospitals and clients in other industries.



Operations and Maintenance Services

In the background of daily din, a beehive of activity takes place. Activities that support the smooth functioning of various other activities. Be it getting the roads cleaned before sunrise or ensuring that street lights are working properly. We have the discipline to keep things in motion. Apart from managing the daily operations of our facilities, we ensure that our client's facilities are also well operated and maintained.





MAINTENANCE WORKSHOP, FACILITIES REFURBISHMENT,
SOFT FACILITIES MAINTENANCE



**ACCOMMODATION MANAGEMENT SERVICES BUILD,
OWN, OPERATE BUILD, OPERATE, TRANSFER**

A photograph of a hotel room. In the foreground, a bed with white linens is partially visible. A beige, textured runner is laid across the bed. On the runner, there is a folded white towel and a small blue object. In the background, a wooden nightstand is visible next to a window with beige curtains. The lighting is warm and soft.

Accommodation Services

We don't just provide a place to live but a place that is full of life. Whether it is accommodation for hundreds of workers or a small group of managers, we have the solutions for every situation. No detail is overlooked, from the alarm clock by the bedside to a vase by the window. Whatever the circumstances, we promise efficient, healthy living spaces.

Laundry Services

The crisp clean whites of a nurse, the sharp crease of a soldier's perfectly starched uniform or the spotless jacket of a chef, our laundry work is immaculate. Day after day, crumpled sheets, greased cuffs and dusty uniforms come to us. And we do what we do best. Return clean folded sheets, neat cuffs and fresh uniforms on time, every time.





**LINEN AND LAUNDRY SERVICES, CENTRAL LAUNDRY DESIGN,
INDUSTRIAL LAUNDRY MANAGEMENT**



**HOUSEKEEPING, INDUSTRIAL AND ONSITE CLEANING, HOSPITAL & OPERATING THEATRE
DISINFECTION & SANITIZATION, JANITORIAL SERVICES, SEWAGE REMOVAL, DISPOSABLE
MATERIALS MANAGEMENT AND PEST CONTROL**

Housekeeping

We know how nice it is to be assured that there is somebody who gets things in order. The silent joy of walking into a pleasant, airy room or finding everything spick and span allows you to savour every moment. Our housekeeping services do exactly that for you. Wherever we work we ensure every little detail is looked into, because it is the smallest details that make life beautiful.

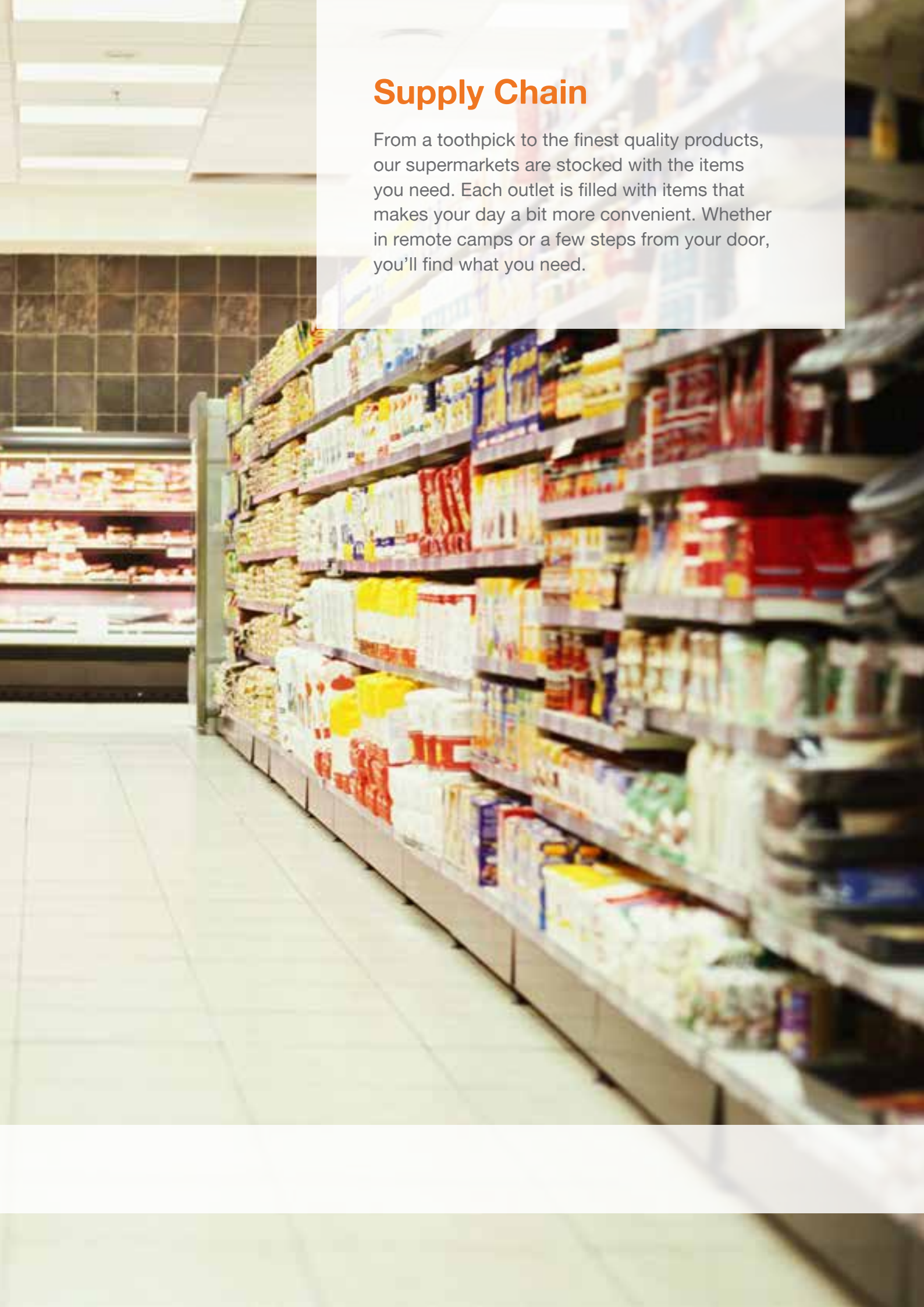




**CONVENIENCE STORES, SUPERMARKETS, MINIMARTS, CENTRAL WAREHOUSES,
MILITARY & HUMANITARIAN READY TO EAT MEALS (MRE)**

Supply Chain

From a toothpick to the finest quality products, our supermarkets are stocked with the items you need. Each outlet is filled with items that makes your day a bit more convenient. Whether in remote camps or a few steps from your door, you'll find what you need.



QHSE

We believe in setting our own benchmarks and then going beyond them. We are open to the world of ideas and innovation, forging partnerships, employing best technologies and business practices from around the world.

We care beyond steel-toed boots and hard hats. When our colleagues are out there, we make sure their surroundings are safe. Our work is important, but more important are the people who we work for, and the people who work for us. Their safety and well-being is our first priority.





ISO 22000 CERTIFIED, HACCP CERTIFIED, ISO 14001 CERTIFIED,
ISO 9001 : 2008 CERTIFIED, OSHA CERTIFIED



Growth that works.

The background of the page features a blue-toned image of two goldfish bowls. In the foreground, a large bowl is filled with water, with a dynamic splash of water rising from the center. Several goldfish are visible swimming within the bowl. A second, slightly smaller bowl is visible behind it to the left, also containing water and goldfish. The overall aesthetic is clean and aquatic, with a focus on water and life.

Sustainability

Progressive societies have survived for centuries by realizing that the key to their survival is sustainability. Taking only what you need and giving back what you take. Wasita is here to stay and just like those societies, we realize that for us to achieve that, we must give to receive. We take this saying seriously and we put it to practice. Whenever we can, wherever we can, we implement sustainable practices in our procedures and practices. Whether it is using eco-friendly catering material, or investing millions in water recycling and treatment plants at our residential villages and camps, we make sure that our footprint is as green as can be. Together with our Corporate Social Responsibility, we ensure that we are here to stay, for us, and for our children.

Corporate Social Responsibility

Without communities, we wouldn't exist. And it is because of them that we grow and prosper. What would 'words that work' be worth if we don't thank the communities that make us? No matter how small a gesture is, the impact is usually significant. Even if it is as small as encouraging a school's soccer team or as big as sponsoring the feeding of whole communities, our Corporate Social Responsibility is as serious and as important as the 'bottom line'. We make sure that we become part of the community and not apart from it. Because it is them that justify our existence and it is because of them that we can grow.

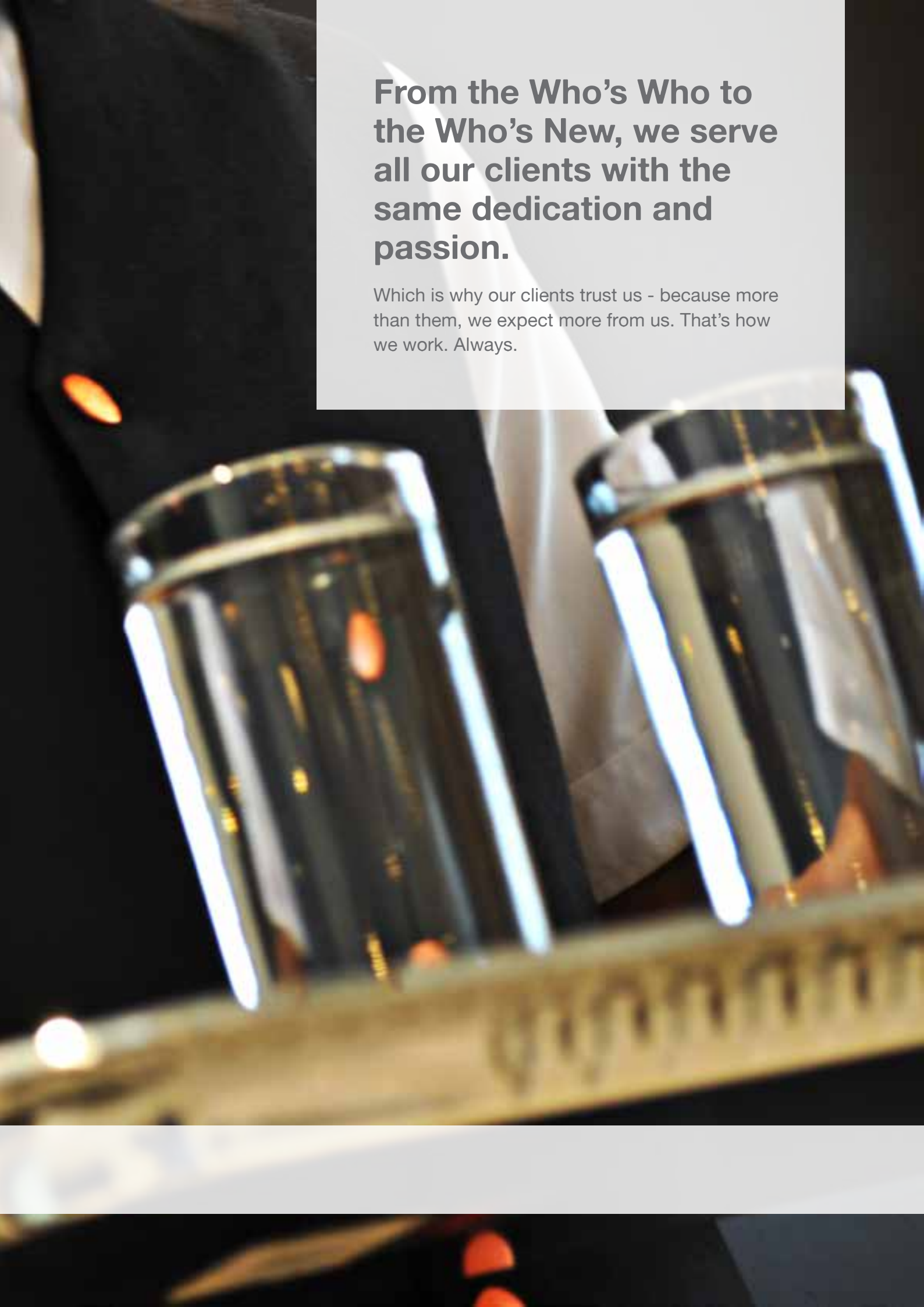


Wasita
Work that works.

Communities that work.



Who we work with.



**From the Who's Who to
the Who's New, we serve
all our clients with the
same dedication and
passion.**

Which is why our clients trust us - because more than them, we expect more from us. That's how we work. Always.

Governments & Defence



Financial Institutions



Energy, Oil & Gas



Healthcare



Hashemite Kingdom of Jordan

Ministry of Health



Education



Commercial & Industrial



